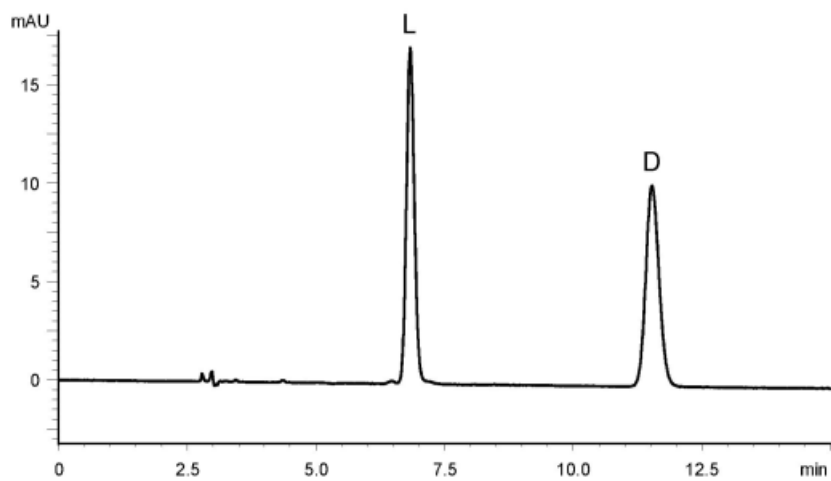


α	2.2
R_s	12.4



Column : CHIRAL ART Amylose-C Neo (5 μ m)
250 X 4.6 mm I.D.
Eluent : *n*-hexane/2-propanol/trifluoroacetic acid (80/20/0.1)
Flow rate : 1.0 mL/min
Temperature : 25°C
Detection : UV at 254 nm
Injection : 10 μ L (1 mg/mL)