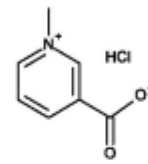
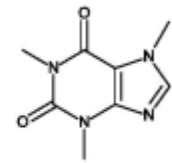


1.



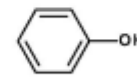
Trigonelline  
hydrochloride

3.



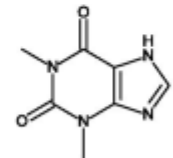
Caffeine

2.



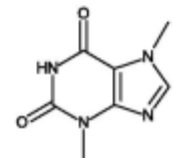
Phenol

4.



Theophylline

5.



Theobromine

Column	: Alcyon SFC Triart Diol (5 $\mu$ m, 12 nm) 150 X 4.6 mm I.D.
Eluent	: CO <sub>2</sub> /ethanol (90/10)
Flow rate	: 3.0 mL/min
Temperature	: 40°C
Detection	: UV at 230 nm
Back Pressure	: 13.8 MPa (2000 psi)
Injection	: 5 $\mu$ L (0.085 mg/mL ~ 5.7 mg/mL)