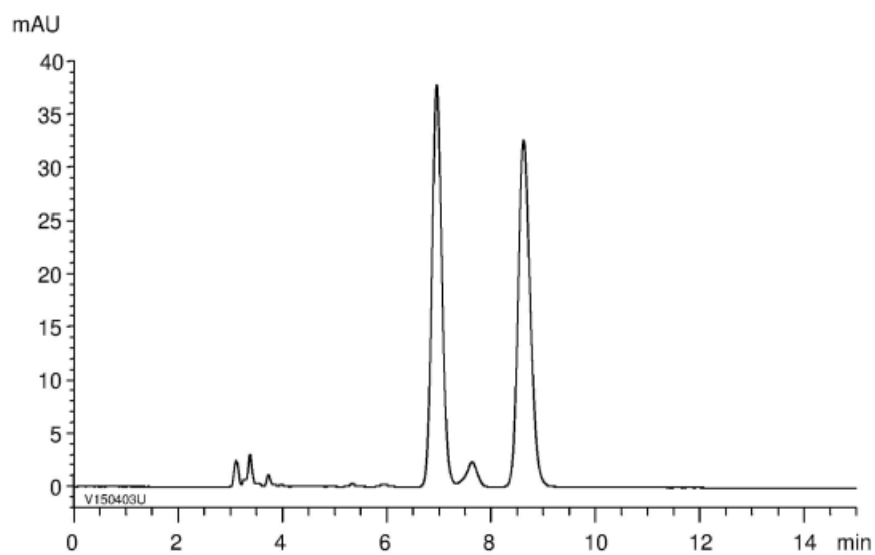


| | |
|----------|-----|
| α | 1.4 |
| Rs | 4.4 |



Column : CHIRAL ART Cellulose-SC (5 μ m)
 250 X 4.6 mm I.D.
 Eluent : *n*-hexane/2-propanol/TFA (80/20/0.1)
 Flow rate : 1.0 mL/min
 Temperature : 25°C
 Detection : UV at 254 nm
 Injection : 10 μ L (1 mg/mL)