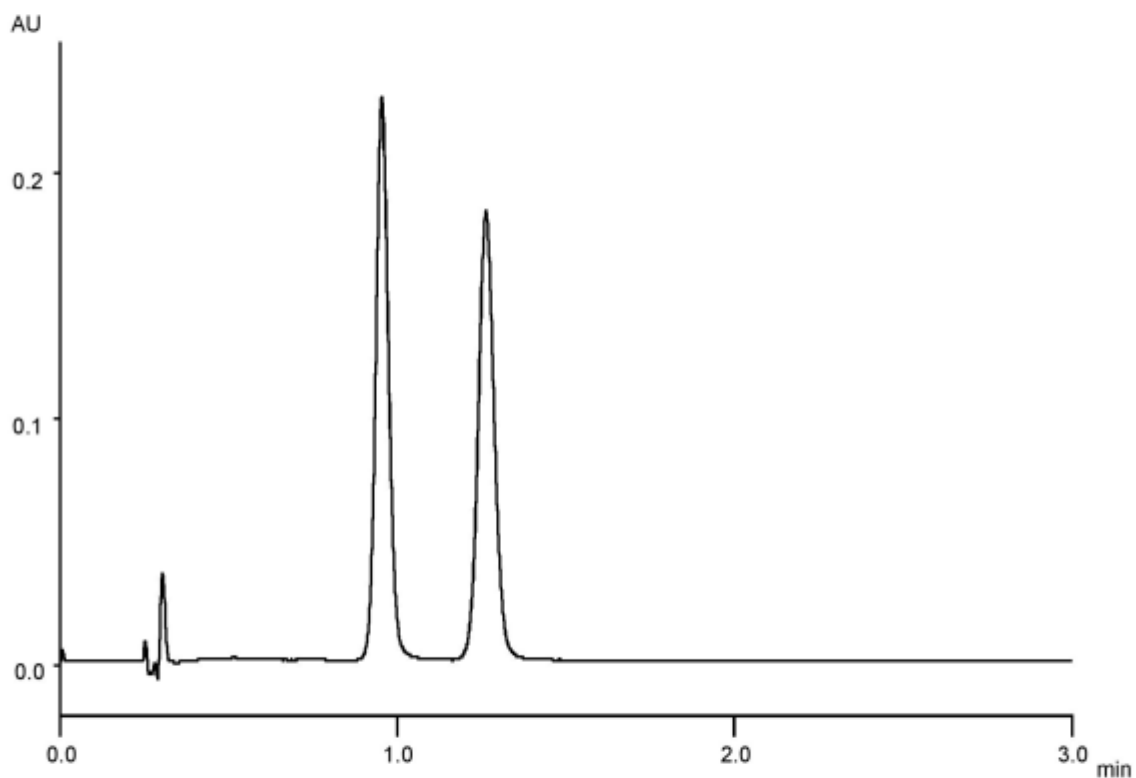


| | |
|----------|-----|
| α | 1.4 |
| R_s | 4.0 |



Column : Alcyon SFC CSP Cellulose-SC (3 μ m)
 50 X 3.0 mm I.D.
 Eluent : CO₂/methanol (80/20)
 Flow rate : 1.275 mL/min
 Temperature : 35°C
 Detection : UV at 280 nm
 Backpressure : 13.8 MPa (2000 psi)
 Injection : 0.7 μ L (1 mg/mL)