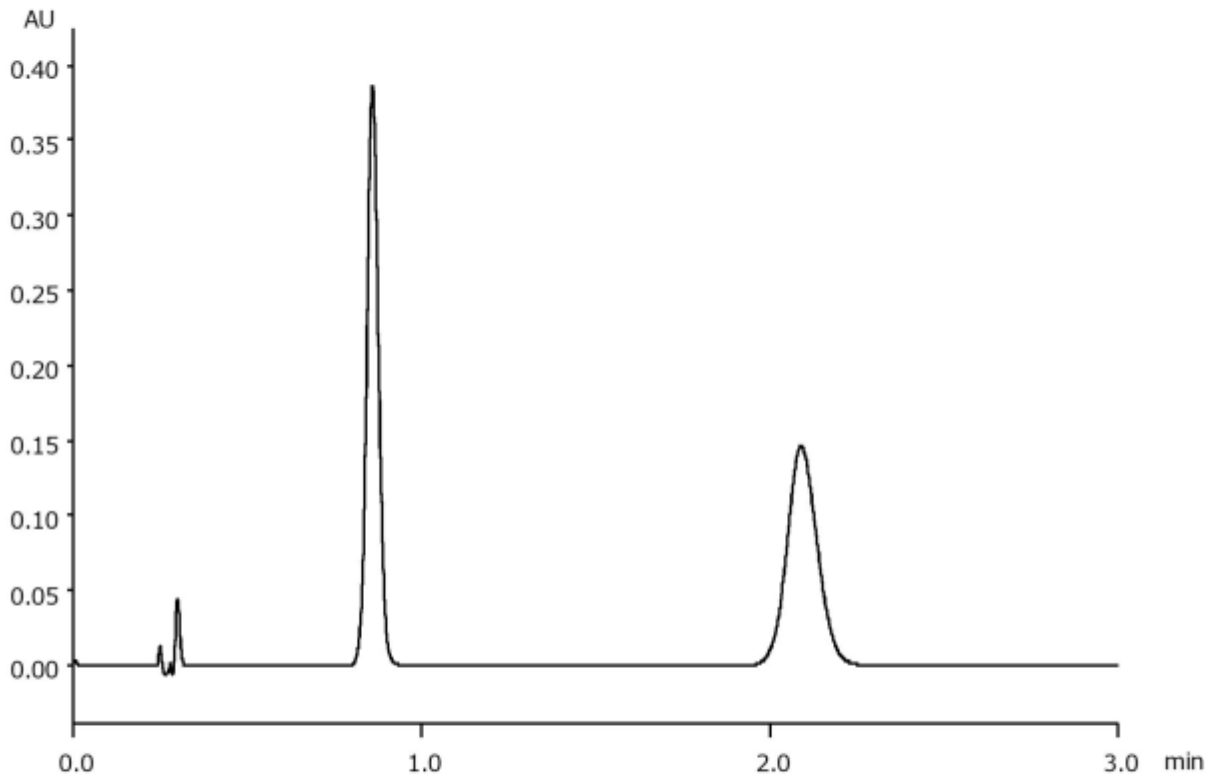


α	1.0
Rs	11.2



Column : Alcyon SFC CSP Amylose-SA (3 μ m)
 50 X 3.0 mm I.D.
 Eluent : CO₂/methanol (80/20)
 Flow rate : 1.275 mL/min
 Temperature : 35°C
 Detection : UV at 230 nm
 Backpressure : 13.8 MPa (2000 psi)
 Injection : 0.7 μ L (1 mg/mL)