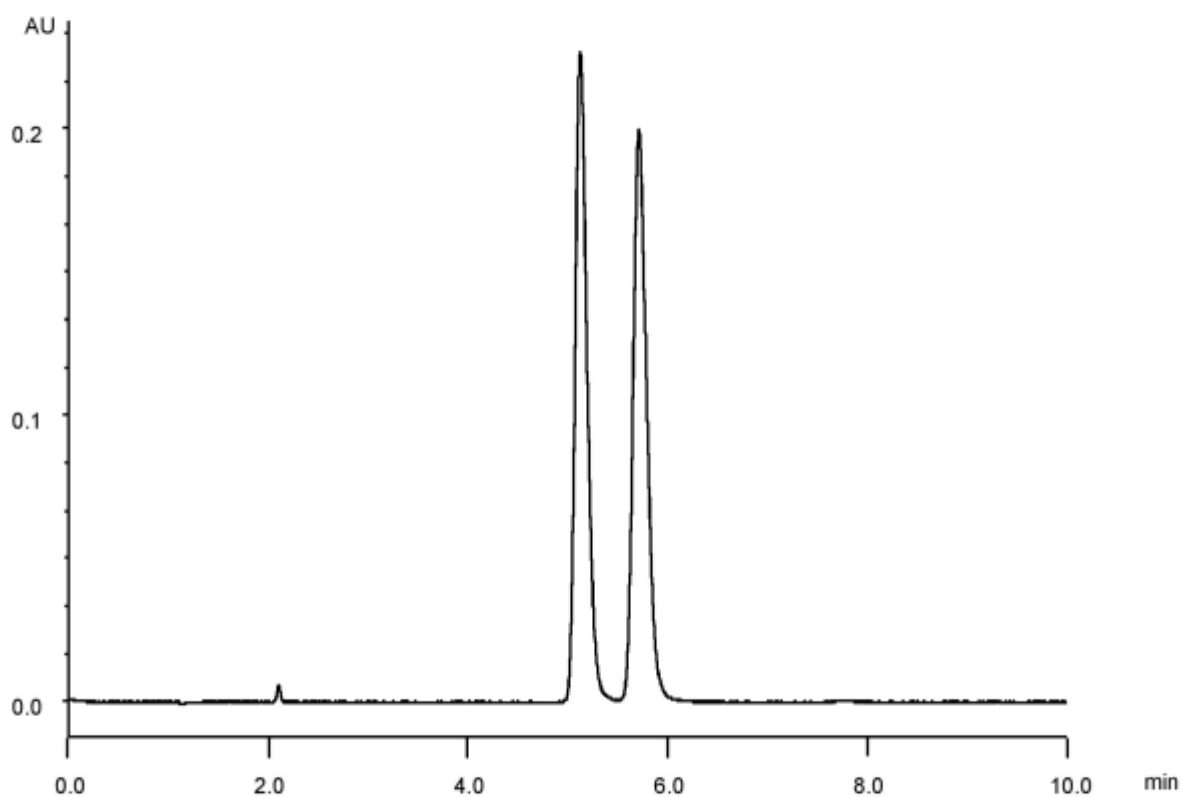


α	1.1
Rs	2.8



Column : Alcyon SFC CSP Cellulose-SJ (5 μ m)
 250 X 4.6 mm I.D.
 Eluent : CO₂/ethanol containing 0.1 % diethylamine (98/2)
 Flow rate : 3.0 mL/min
 Temperature : 35°C
 Detection : UV at 260 nm
 Backpressure : 13.8 MPa (2000 psi)
 Injection : 2 μ L (5 mg/mL)