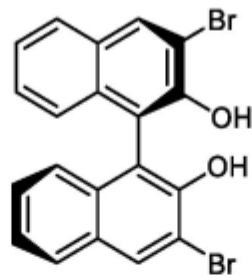
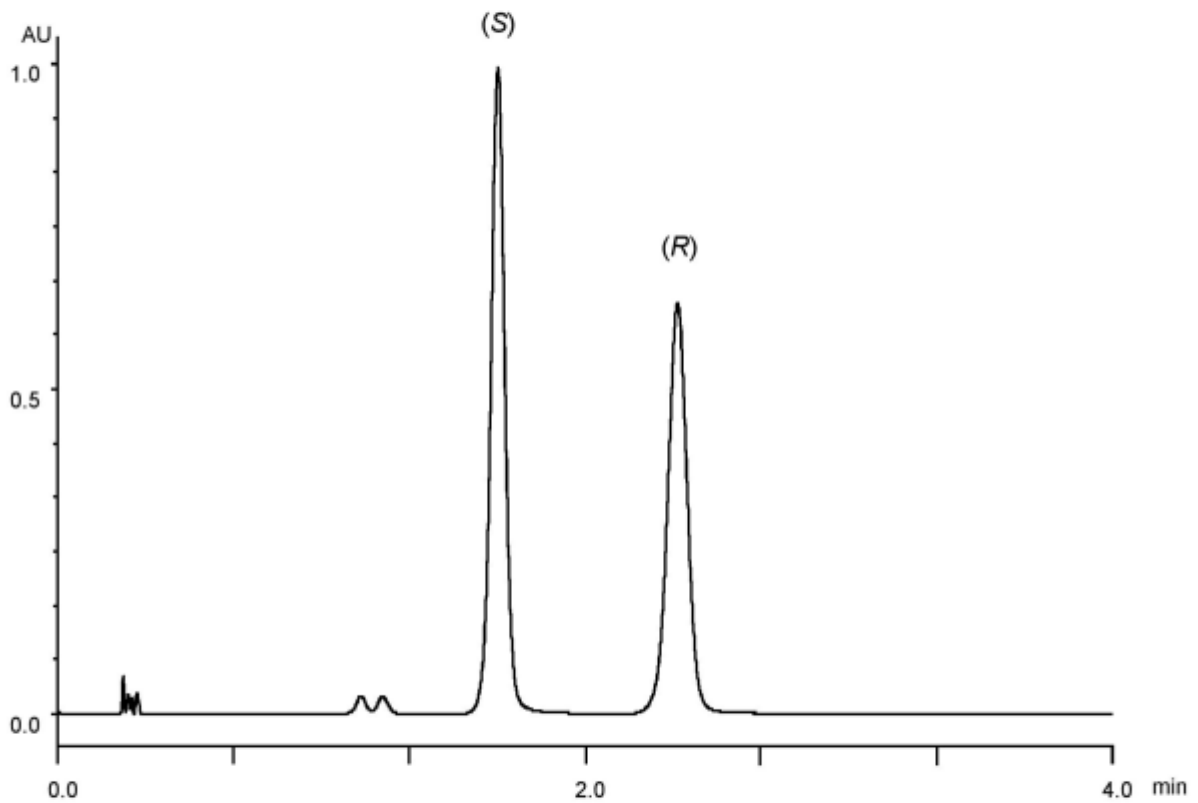


(S)



(R)

α	1.5
Rs	6.0



Column : Alcyon SFC CSP Cellulose-SJ (3 μ m)
 50 X 3.0 mm I.D.
 Eluent : CO₂/methanol/acetonitrile (75/12.5/12.5)
 Flow rate : 1.275 mL/min
 Temperature : 35°C
 Detection : UV at 230 nm
 Backpressure : 13.8 MPa (2000 psi)
 Injection : 0.4 μ L (1 mg/mL)