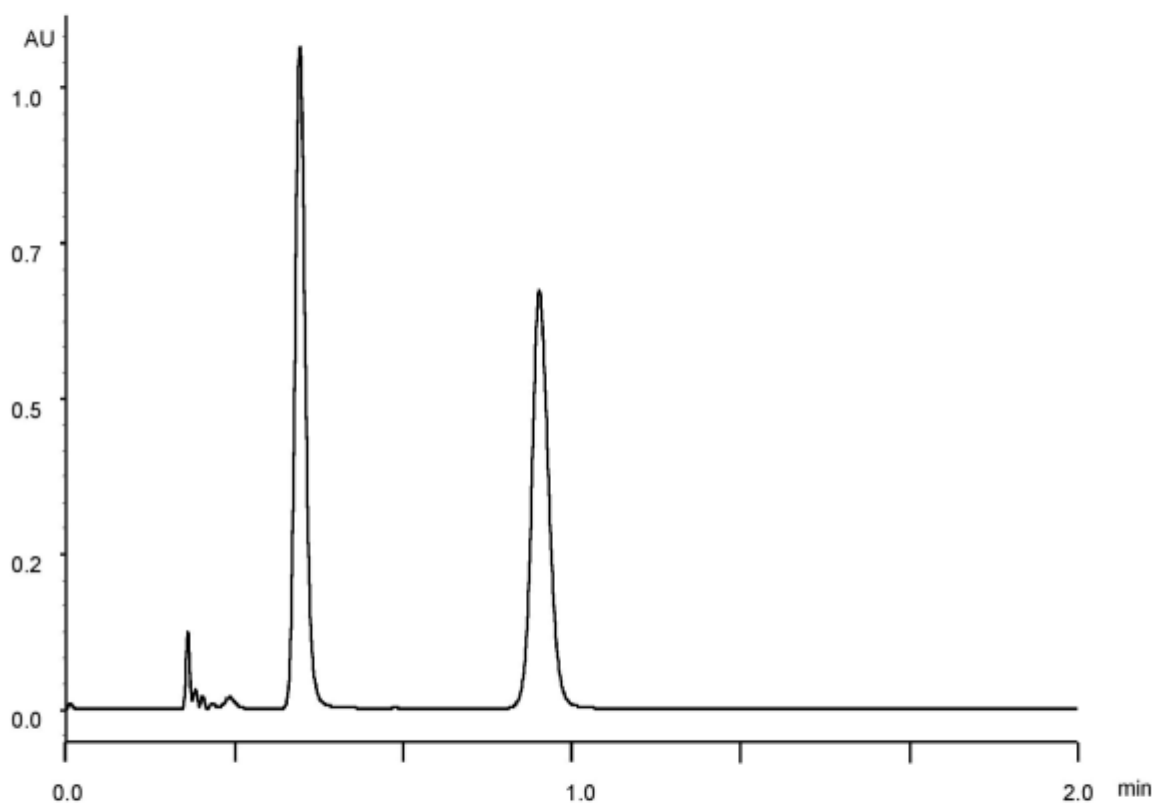


α	3.2
R_s	9.8



Column : Alcyon SFC CSP Cellulose-SJ (3 μ m)
50 X 3.0 mm I.D.
Eluent : CO₂/2-propanol (75/25)
Flow rate : 1.275 mL/min
Temperature : 35°C
Detection : UV at 210 nm
Backpressure : 13.8 MPa (2000 psi)
Injection : 0.7 μ L (1 mg/mL)