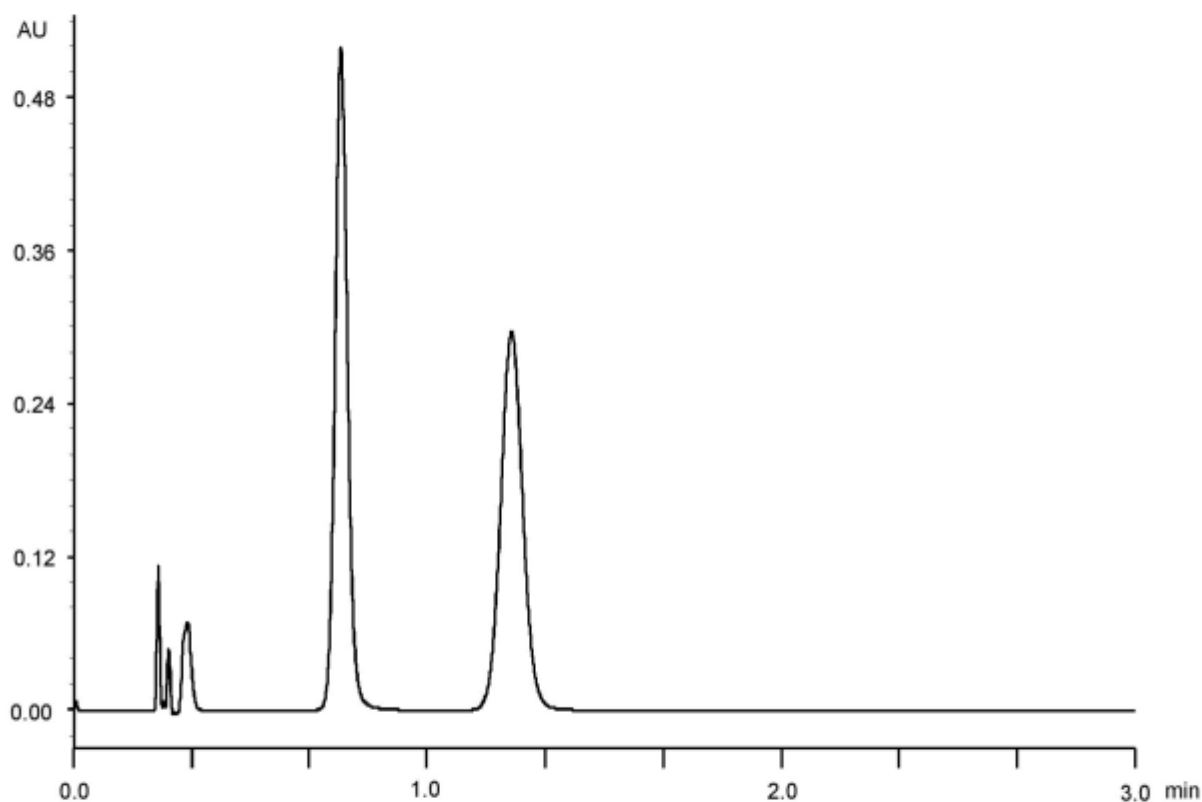


| | |
|----------|-----|
| α | 2.0 |
| Rs | 5.5 |



Column : Alcyon SFC CSP Cellulose-SJ (3 μ m)
 50 X 3.0 mm I.D.
 Eluent : CO₂/2-propanol (70/30)
 Flow rate : 1.275 mL/min
 Temperature : 35°C
 Detection : UV at 210 nm
 Backpressure : 13.8 MPa (2000 psi)
 Injection : 0.7 μ L (1 mg/mL)