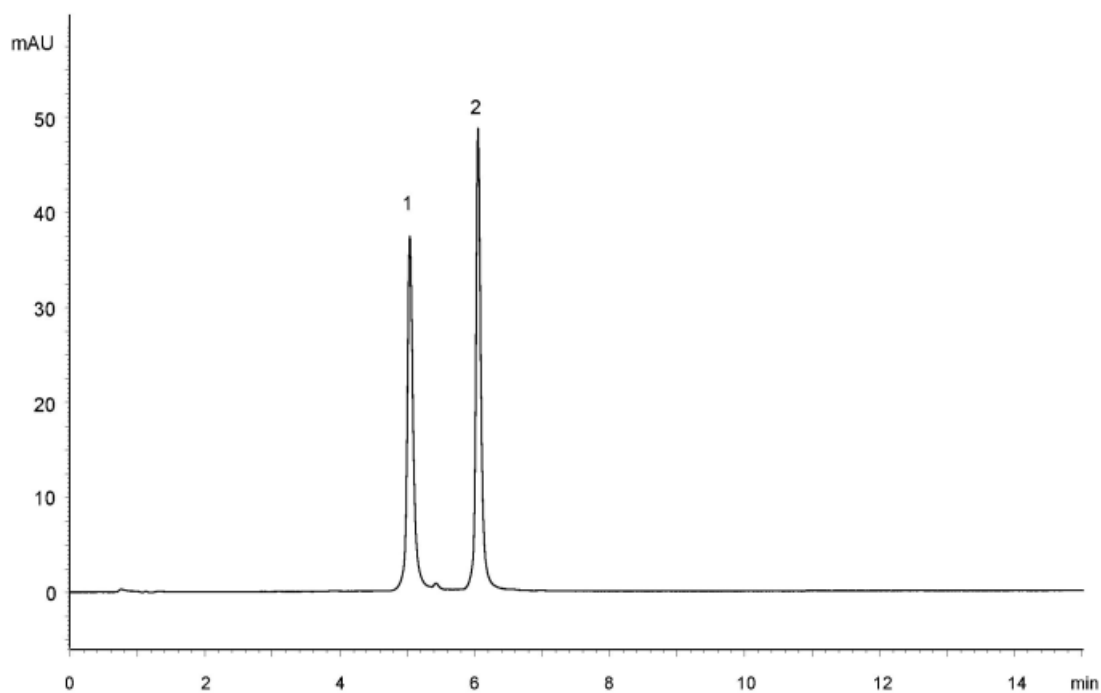


1. 5'-U(M)C(M)A(M)U(M)C(M)A(M)C(M)A(M)C(M)U(M)G(M)A(M)A(M)U(M)A(M)C(M)C(M)A(M)A(M)U(M)-3' (20 mer)
 2. 5'-G(M)U(M)C(M)A(M)U(M)C(M)A(M)C(M)A(M)C(M)U(M)G(M)A(M)A(M)U(M)A(M)C(M)C(M)A(M)A(M)U(M)-3' (21 mer)
- N(M)=2'OMe RNA



Column : YMC-BioPro QA-F (5 μ m)
100 X 4.6 mm I.D.

Eluent : A) 10 mM NaOH
B) 10 mM NaOH containing 1.0 M NaClO₄
25-55%B (0-15 min), 100%B (15-20 min)

Flow rate : 1.0 mL/min

Temperature : 25°C

Detection : UV at 260 nm

Injection : 4 μ L (5 nmol/mL)