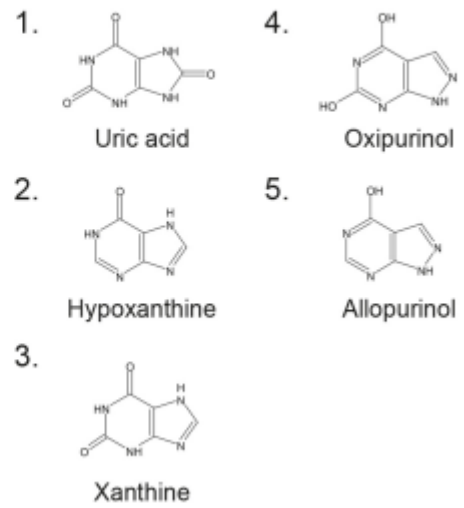
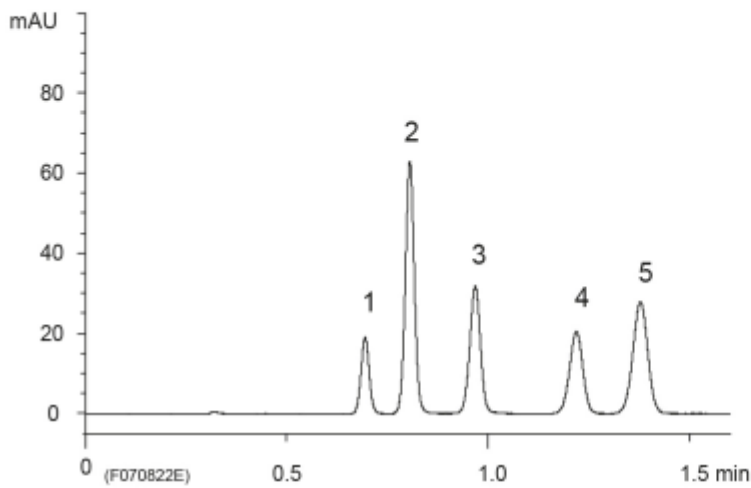
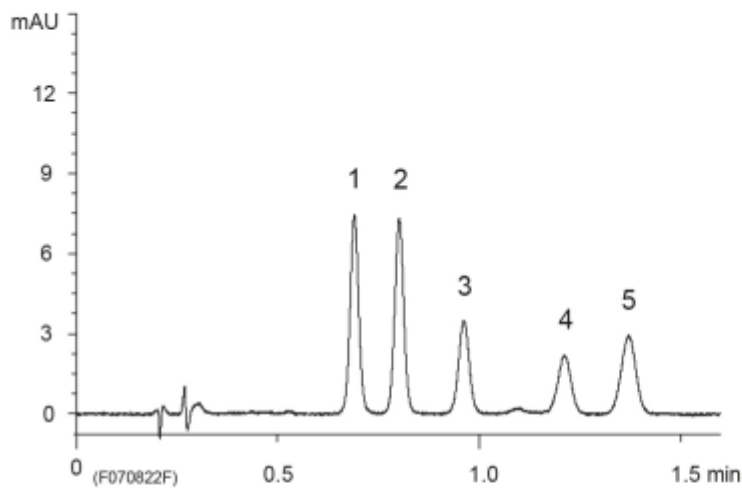


### A) Standard (100 • g/mL)



### B) Spiked human serum (10 • g/mL)



#### < Solid-phase extraction method >

YMC Dispo SPE C18 100 mg/1 mL

##### Condition

2 mL methanol  
2 mL 10 mM acetate buffer (pH 4.5)

##### Load

500 • L spiked human serum solution

##### Elute

500 • L 10 mM acetate buffer (pH 4.5) / methanol (90/10)

Column : YMC-UltraHT Hydrosphere C18 (2 • m, 12 nm)  
50 X 2.0 mmI.D.  
Eluent : 10 mM CH<sub>3</sub>COOH-CH<sub>3</sub>COONH<sub>4</sub> (pH 4.5)  
Flow rate : 0.6 mL/min  
Temperature : 37 °C  
Detection : UV at 254 nm  
Injection : 0.5 • L