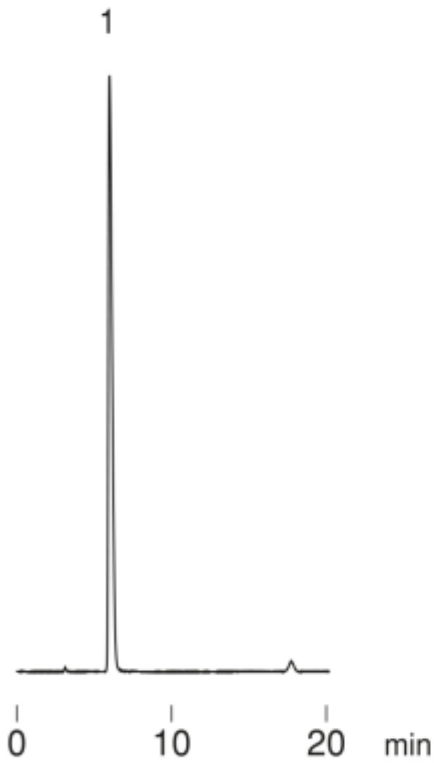
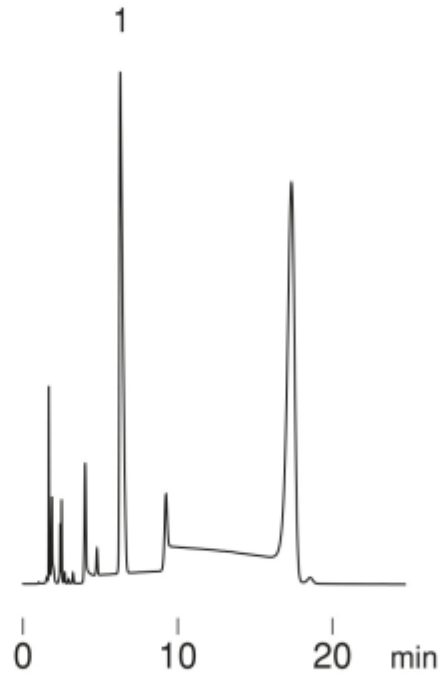


(A) FLS



(B) UV



1. Taurine

Column : Hydrosphere C18 (5  $\mu$  m, 12nm)  
150  $\times$  4.6 mm I.D.  
Eluent : 10mM KH<sub>2</sub>PO<sub>4</sub>-K<sub>2</sub>HPO<sub>4</sub>(pH6.8)/acetonitrile(85/15)  
Flow rate : 1.0 mL/min  
Temperature : 30 °C  
Detection : (A)FLS at Ex 345 nm, Em 450 nm  
(B)UV at 254 nm, 0.32 AUFS  
Injection : 15  $\mu$  L  
Sample : OPA derivative