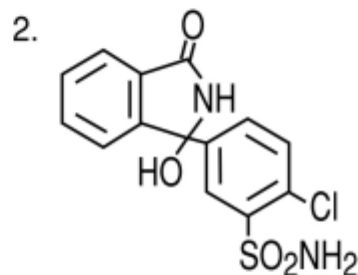
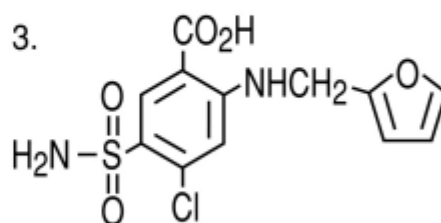


Hydrochlorothiazide



Chlorthalidone



Furosemide

Column : YMC-Pack Pro C18 (3 μ m, 12nm)
75 \times 2.0 mm I.D.
Eluent : methanol / 1% acetic acid (40/60)
Flow rate : 0.2 mL/min
Temperature : 37 $^{\circ}$ C
Detection : UV at 280 nm, 0.08 AUFS
Injection : 3 μ L (0.015~0.2 mg/mL)