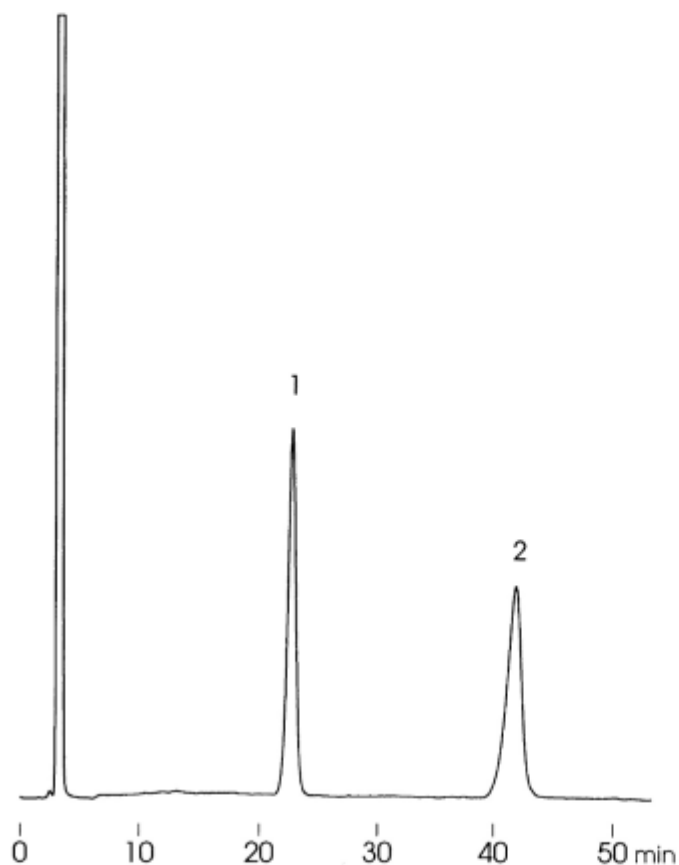


1. Gal  $\alpha$  1 $\rightarrow$ 6Glc  $\alpha$  1 $\rightarrow$ 2  $\beta$  Fruf (Raffinose)
2. [Gal  $\alpha$  1 $\rightarrow$ 6]<sub>2</sub>Glc  $\alpha$  1 $\rightarrow$ 2  $\beta$  Fruf (Stachyose)



Column : YMC-Pack Polyamine II  
250 × 4.6 mm I.D.  
Eluent : acetonitrile/water (70/30)  
Flow rate : 1.0 mL/min  
Temperature : ambient (26 °C)  
Detection : RI, 32 × 10<sup>-6</sup> RIU/FS  
Injection : 20 μL (4.0 mg/mL)